

How to Play Tom Beats in 3 Easy Steps

Nathaniel Smith

3:46" >

Musical notation for a 3:46" tom beat pattern. It consists of two measures. The first measure contains a sequence of eighth notes with 'x' marks above them, indicating a specific drumming technique. The second measure contains a sequence of eighth notes with accents (>) above them. The notation is on a single staff with a double bar line at the end.

Quarters: > Eighths: >

Musical notation for two variations of the 3:46" tom beat pattern. The first variation is labeled 'Quarters: >' and shows a sequence of quarter notes with accents. The second variation is labeled 'Eighths: >' and shows a sequence of eighth notes with accents. Both are on a single staff with a double bar line at the end.

4:43" >

Musical notation for a 4:43" tom beat pattern. It consists of two measures. The first measure contains a sequence of eighth notes with 'x' marks above them. The second measure contains a sequence of eighth notes with accents (>) above them. The notation is on a single staff with a double bar line at the end.

Musical notation for a variation of the 4:43" tom beat pattern. It consists of two measures of eighth notes with accents (>) above them. The notation is on a single staff with a double bar line at the end.

Quarters: >

Musical notation for a variation of the 4:43" tom beat pattern. It consists of two measures of quarter notes with accents (>) above them. The notation is on a single staff with a double bar line at the end.

Eighths: >

Musical notation for a variation of the 4:43" tom beat pattern. It consists of two measures of eighth notes with accents (>) above them. The notation is on a single staff with a double bar line at the end.

5:22" >

Musical notation for a 5:22" tom beat pattern. It consists of two measures. The first measure contains a sequence of eighth notes with 'x' marks above them. The second measure contains a sequence of eighth notes with accents (>) above them. The notation is on a single staff with a double bar line at the end.


Musical notation for a variation of the 5:22" tom beat pattern. It consists of two measures of eighth notes with accents (>) above them. The notation is on a single staff with a double bar line at the end.

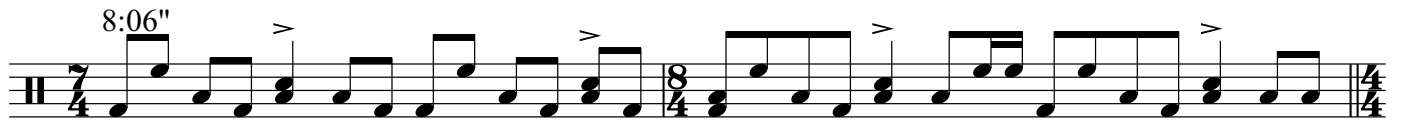
Quarters: >

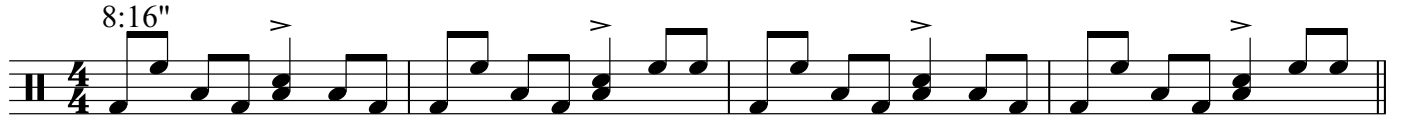
Musical notation for a variation of the 5:22" tom beat pattern. It consists of two measures of quarter notes with accents (>) above them. The notation is on a single staff with a double bar line at the end.

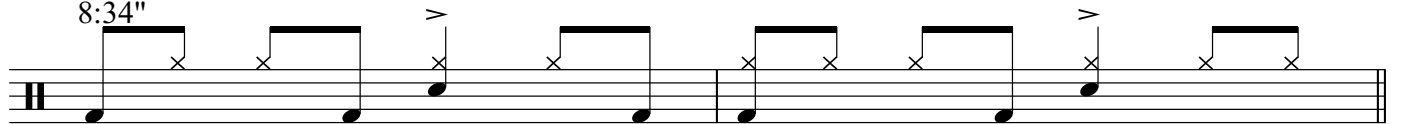
Eighths: >


Musical notation for a variation of the 5:22" tom beat pattern. It consists of two measures of eighth notes with accents (>) above them. The notation is on a single staff with a double bar line at the end.


6:42" 
 R L R R


8:06" 
 L R L R L


8:16" 
 R L R L


8:34" 
 L R R R R L R R R L


9:24" 
 L R R L R L R L R L R

10:24" 
 L R L R L R L L R R L R R L

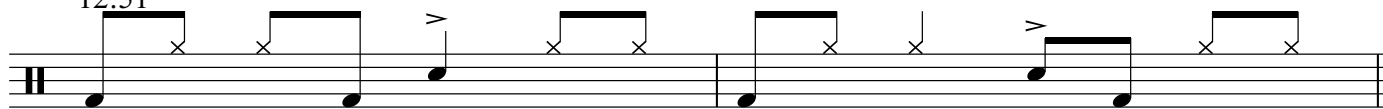
11:20" 
 L R R L R R L L R R L R L R R L

11:43" 
 L R R L R L L R R L R L R L

12:11" 
 L R R L R R L R L R R L R R L

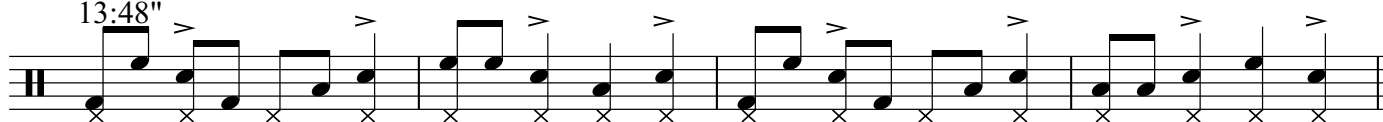
12:35" 
 L R L R L L R L L R L L R L L R L

12:51"



L R L R L L R L R L

13:48"



L R R L R R L R L L R R R L R L

14:04"



L R R L R R L R L R L