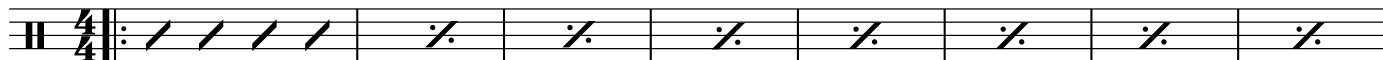


Christmas in L.A.

Vulfpeck, Nathaniel Smith

A GROOVE



B



A



C



2

A

-15-

A musical staff with a treble clef and a key signature of one flat. It contains a sequence of notes and rests: a whole rest, a half rest, a quarter note with a slash, a quarter note with a slash, a quarter note with a slash, a quarter note with a slash, a quarter note with a diamond, a quarter note with a diamond, a quarter note with a dot, an eighth note with a slash, a quarter note with a dot, and a quarter note with a slash.

GROOVE

A musical staff with a treble clef and a key signature of one flat. It contains a sequence of rhythmic slashes: a double bar line followed by a repeat sign, then four slashes, a slash with a dot, a slash with a dot, a slash with a dot, a slash with a dot, a slash with a dot, a slash with a dot, a slash with a dot, and a slash with a dot.

LAST X ONLY

A musical staff with a treble clef and a key signature of one flat. It contains a sequence of rhythmic slashes and notes: a double bar line followed by a repeat sign, then seven slashes with dots, a quarter note with a slash, an eighth note with a slash, a quarter note with a dot, a quarter note with a slash, a double bar line, a quarter note with a slash, a quarter rest, and a double bar line.